

GTi Pro

HIGH PERFORMANCE, BASE AND CLEARCOAT TECHNOLOGY SPRAY GUNS

A totally new Devilbiss spray gun developed for busy professional painters needing the ultimate in quality finishes.

Three advanced technology, air caps (one HVLP and two Trans-Tech) for optimum application performance with the latest solvent and waterborne coatings.

All new ergonomic gun body design with even better fit and balance for comfort and control.

New ultra high flow fluid tips provide superb versatility across a range of viscosities.

Revolutionary air valve design gives smoother feel for even greater air and paint control for ease of fade-outs and blend-ins.

Simplified, user friendly components provide easy cleaning and maintenance.

Part Number Explanation

GTIPRO - T1 - B - 13

Model Air Cap Base Fluid Tip



No H1 HVLP Air Cap



No T1 Trans-Tech Air Cap



No T2 Trans-Tech Air Cap

Specification

| | | | |
|--------------------|--|--------------------|-----------------|
| Air Inlet Pressure | 2.0 bar (29psi) | Cup Capacity | 560 mls |
| Air Consumption | T1: 280 l/min (9.9 cfm) T2: 350 l/min (12.4 cfm) H1 450 l/min (15.9 cfm) | Weight (gun & cup) | 768 gms |
| Air Inlet Thread | 1/4" Universal | Air Cap & Ring | Plated Brass |
| | | Fluid Tip | Stainless Steel |
| | | Fluid Needle | Stainless Steel |



DGI-501-BAR

GTi-Pro Spray Gun Kits

When ordering please specify the air cap of your choice (H1, T1 or T2), the tip size of your choice (12, 13 or 14) and the paint type marking required on your gun B=BASE, C=CLEAR

| Part No | Examples | Description |
|---------------|----------|---|
| GTIPRO-T2C-12 | | Gun with a T2 Trans-Tech air cap, a #12 fluid tip and marked as "CLEAR" |
| GTIPRO-H1B-13 | | Gun with a H1 HVLP air cap, a #13 fluid tip and marked as "BASE" |
| GTIPRO-T1C-13 | | Gun with a T1 Trans-Tech air cap, a #13 fluid tip and marked as "CLEAR" |

Kit includes GTi PRO Gravity gun, cup, paint filter, brush, set of 4 identification rings and combination spanner



MPV-60-K3

Accessories

| Part No | Description |
|--------------|--|
| PRO-100-H1-K | H1 HVLP Air Cap and retaining ring |
| PRO-100-T1-K | T1 Trans-Tech Air Cap and retaining ring |
| PRO-100-T2-K | T2 Trans-Tech Air Cap and retaining ring |
| PRO-200-**-K | Fluid Nozzle Size Numbers 12, 13 & 14 |
| PRO-300-K | Fluid Needle |
| PRO-415 | Spray Gun Service/Repair Kit |
| SPN-8-K2 | Torx & flat blade Screwdriver - Trigger & Needle Packing |
| SN-28-K | Spanner Ring for fluid tip and open end for valves/inlet |
| DGI-501-BAR | Digital Gauge - Reads in bars |
| MPV-60-K3 | Male Quick Detach Uni Swivel - fits to gun air inlet |
| HAF-507-K12 | Lightweight in-line air filter. |
| 4900-5-1-K3 | Pack of three cleaning brushes |
| KGP-5-K5 | Pack of 5 gravity cup filters for GFC cups |

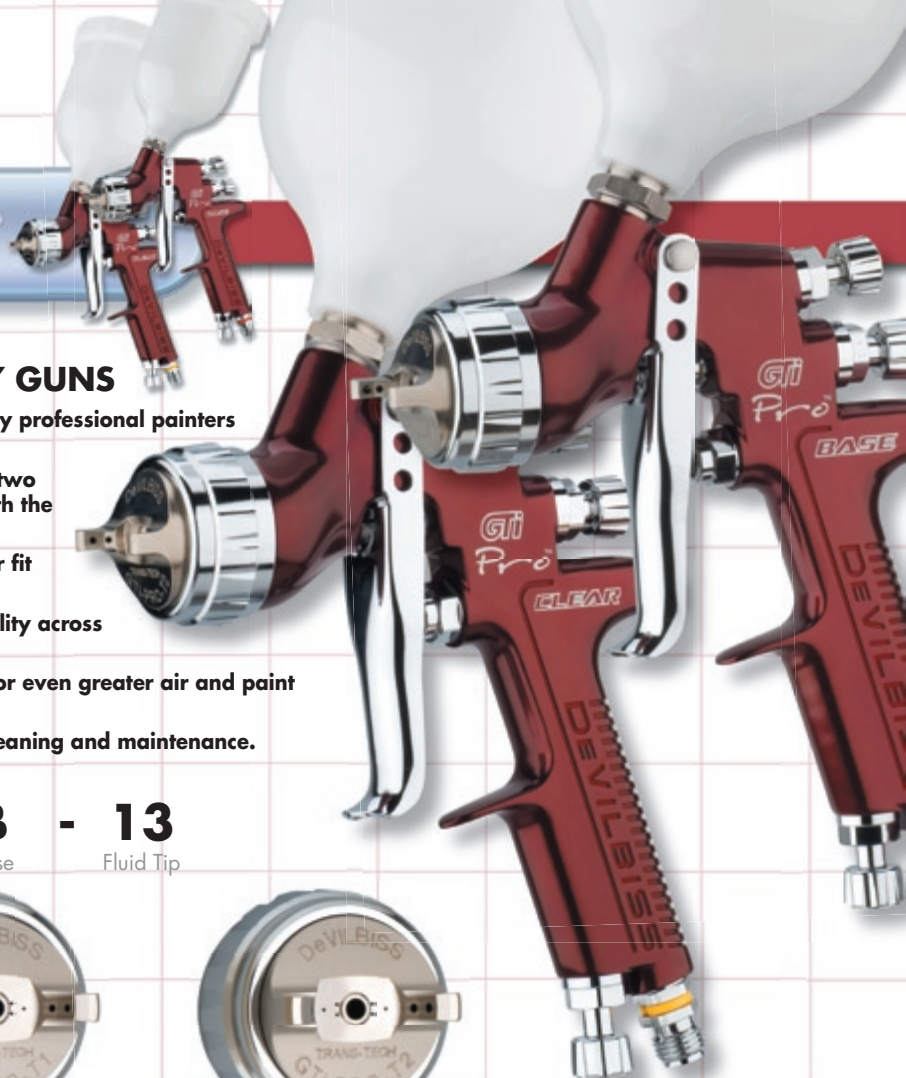


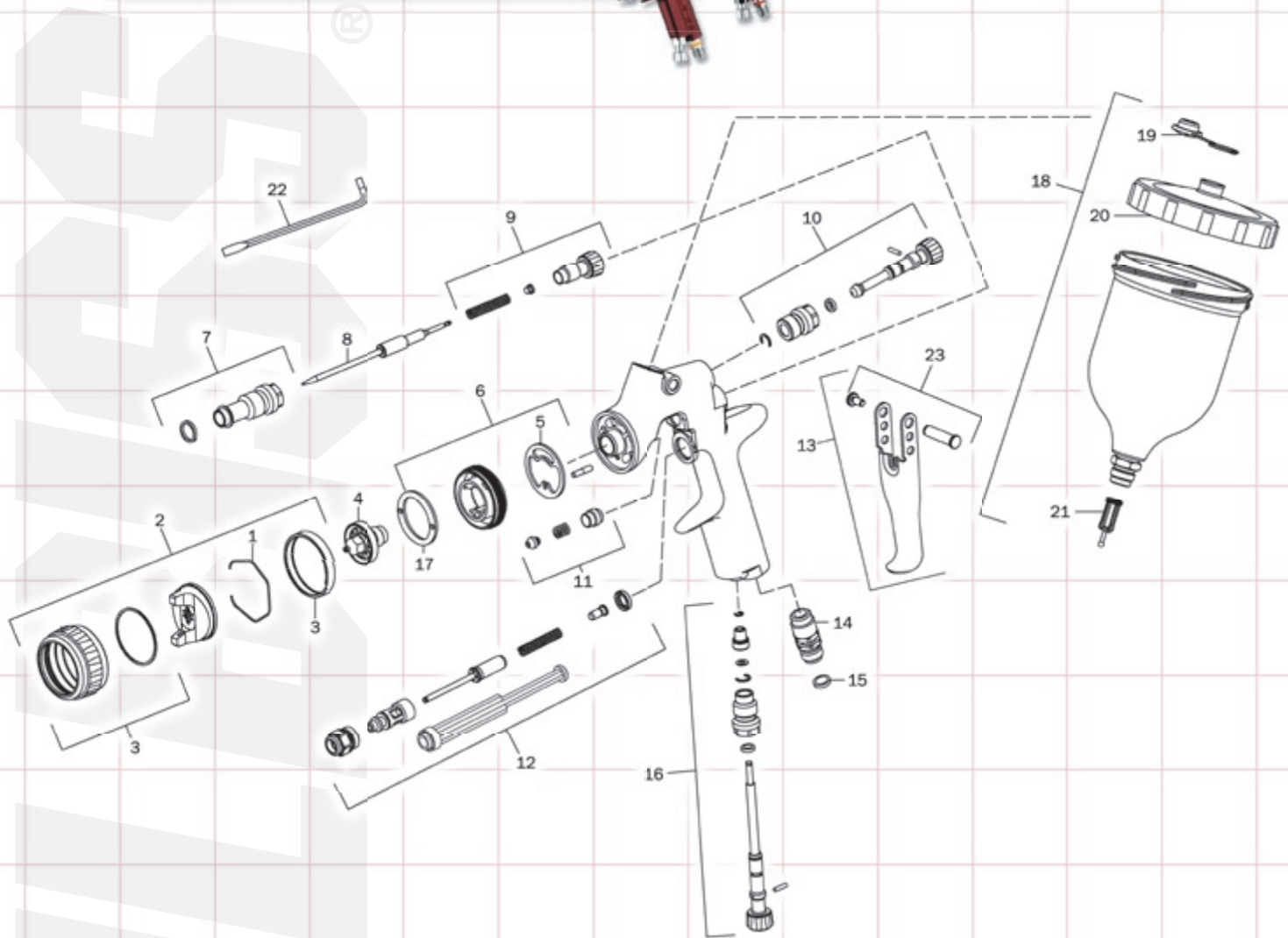
HAF-507-K12



PRO-415

** = Fluid tip size





| Ref No | Description | Part Number | Qty |
|--------|--|--------------|-----|
| 1 | Air Cap Retaining Clip | JGA-156-K5 | 1 |
| 2 | T1 Trans-tech® Aircap & Ring | PRO-100-T1-K | 1 |
| | T2 Trans-tech® Aircap & Ring | PRO-100-T2-K | 1 |
| | H1 HVLP Aircap & Ring | PRO-100-H1-K | 1 |
| 3 | Air Cap Retaining Ring & Seals | PRO-405-K | 1 |
| 4 | Fluid Nozzle | PRO-200-**-K | 1 |
| 5 | Spray Head Seal (kit of 2) | SN-18-K2 | 1 |
| 6 | Spray Head & Seal Kit | SN-17-K | 1 |
| 7 | Body Bushing & Seal | SN-6-K | 1 |
| 8 | Fluid Needle | PRO-300-K | 1 |
| 9 | Fluid Adjusting Knob, Spring & Pad Kit | PRO-3-K | 1 |
| 10 | Spreader Valve Assembly | PRO-402-K | 1 |
| 11 | Packing, Spring & Packing Nut Kit | SN-404-K | 1 |

** = Fluid tip size

| Ref No | Description | Part Number | Qty |
|--------|--------------------------------------|-------------|-----|
| 12 | Air Valve Replacement Kit | SN-402-K | 1 |
| 13 | Trigger, Stud & Screw Kit | SN-21-K | 1 |
| 14 | Air Inlet | SN-40-K | 1 |
| 15 | Colour ID Ring Kit (4 Colours) | SN-26-K4 | 1 |
| 16 | Airflow Valve | PRO-411-K | 1 |
| 17 | Baffle plate | SN-41-K | 1 |
| 18 | Gravity Cup Kit | GFC-501 | 1 |
| 19 | Drip Check Lid (kit of 5) | GFC-2-K5 | 1 |
| 20 | Gravity Cup Lid | GFC-402 | 1 |
| 21 | Filter | KGP-5-K5 | 1 |
| 22 | Torx Key | SPN-8-K2 | 1 |
| 23 | Trigger Stud & Torx Screw (kit of 5) | SN-405-K5 | 1 |

Service Parts

| | | |
|----------------------------|------------|--|
| Spray Gun repair kit | PRO-415 | |
| Seal and Pin Kit, kit of 5 | GTI-428-K5 | |